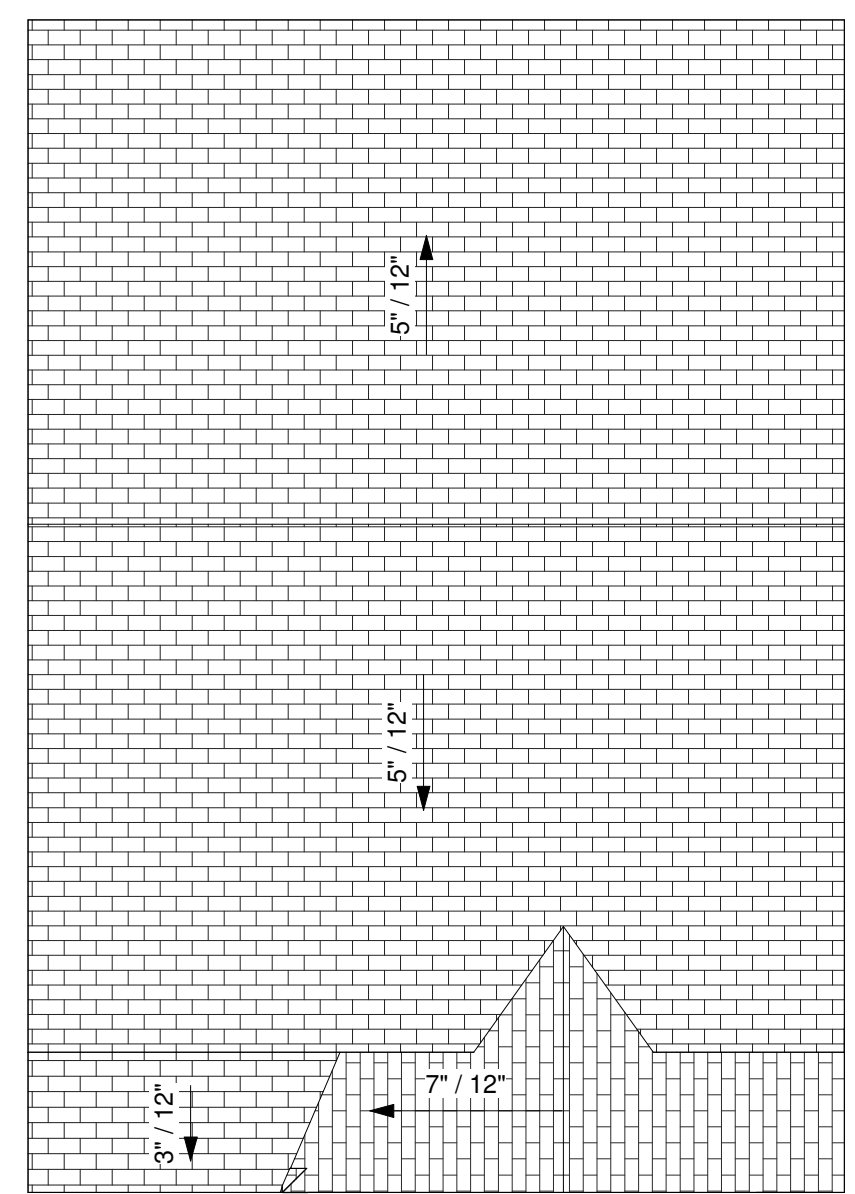


GARAGE SQUARE FOOTAGE	
GARAGE	492.98 SF
2-Stall	492.98 SF

HOUSE SQUARE FOOTAGE	
LEVEL	AREA
Finished	
UPPER LEVEL	820.94 SF
FOYER & STAIRS	148.04 SF
LOWER LEVEL	701.83 SF
Finished	1670.82 SF
UnFinished	
LOWER LEVEL	96.26 SF
LOWER LEVEL	146.44 SF
UnFinished	242.70 SF
Grand total	1913.52 SF

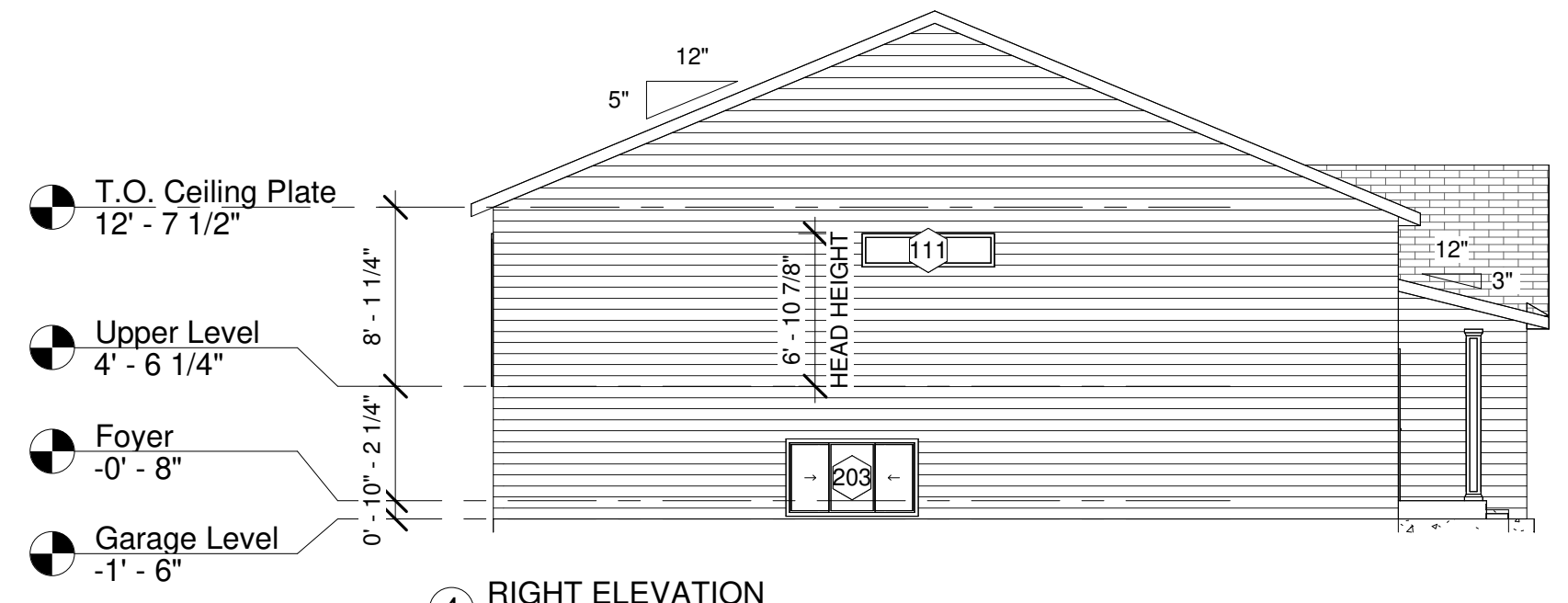
Window Schedule			
Window #	Type	Size	#
203	3 Lite End Vent Glider	72" x 42"	1
208	Casement	30" x 42"	1
135	Slider	42" x 36"	1
136	Slider	48" x 24"	1
137	Slider	60" x 42"	2
133	Slider	60" x 48"	1
111	Transom	72" x 18"	2
Grand total			9



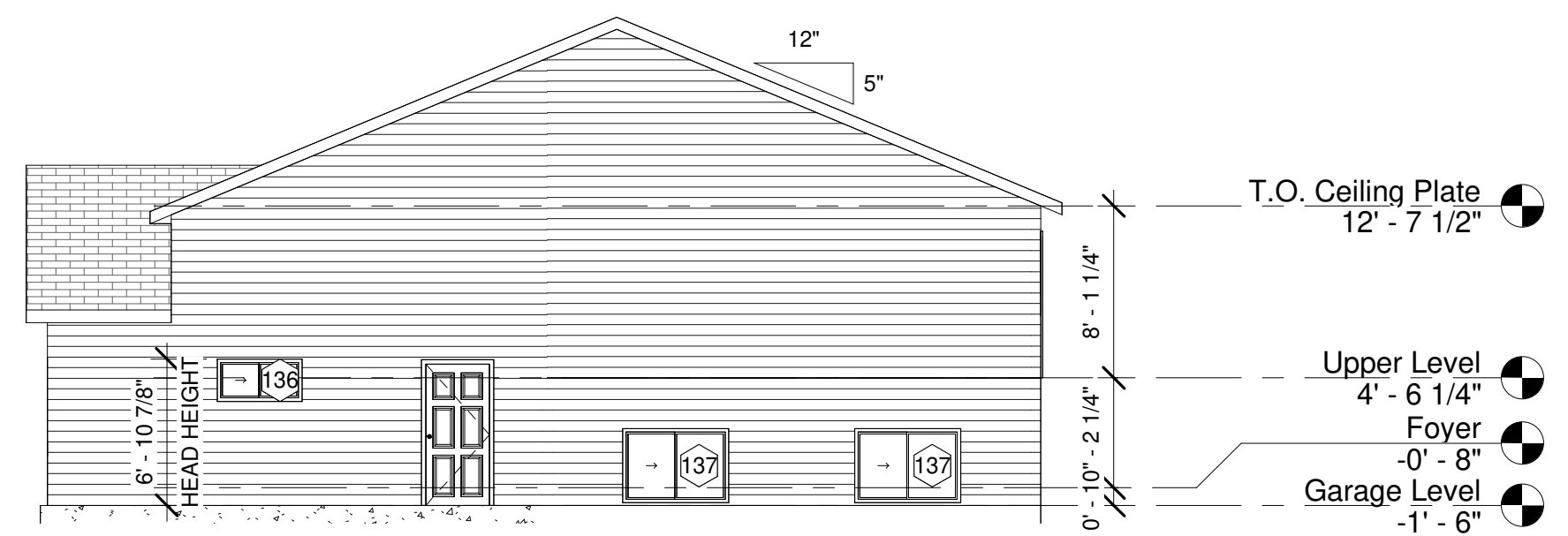
2 Roof Plan
1/8" = 1'-0"



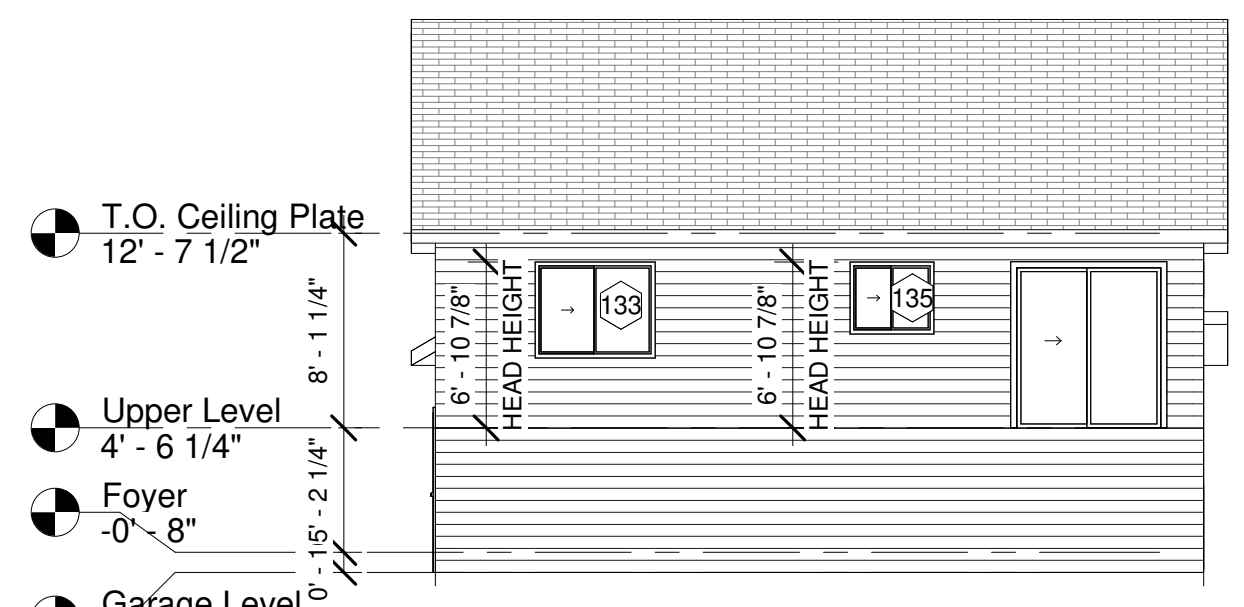
3 Front
1/8" = 1'-0"



4 RIGHT ELEVATION
1/8" = 1'-0"



6 LEFT ELEVATION
1/8" = 1'-0"



5 REAR ELEVATION
1/8" = 1'-0"

Jordahl
Custom Homes Inc.

Jordahl Custom Homes
2832 Sheyenne Street
West Fargo, North Dakota 58078
Phone : 701 - 234 - 0404
Fax : 701 - 282 - 4342
www.jordahlcustomhomes.com

FINAL DRAWINGS FOR
CONSTRUCTION
CUSTOMER APPROVAL:

DATE:

****ATTENTION****
ANY USE, REPRODUCTION,
COPYING, MODIFICATION, OR
DERIVATIVE WORK OF THE PLAN(S)
FURNISHED BY **JORDAHL CUSTOM
HOMES** IS A VIOLATION OF THE UNITED
FEDERAL COPYRIGHT ACT.
© 2006 JORDAHL CUSTOM
HOMES, INC.

DRAWN BY: MICHAELA P.
CHECKED BY: ERIK H.
DATE: JULY 8, 2024

REVISION #1:
REVISION #2:
REVISION #3:
REVISION #4:
REVISION #5:
REVISION #6:

3755 19TH - MODEL HOME
3755 19TH STREET SOUTH
CITY OF MOORHEAD, MN 56560
LOT #12 / BLOCK #1
JOHNSON FARMS 7TH ADDITION

SHEET DESCRIPTION
ELEVATIONS AND ROOF PLAN

HOUSE TYPE OR DESCRIPTION
WALSH - 2 STALL

A1

FINAL DRAWINGS FOR
 CONSTRUCTION
 CUSTOMER APPROVAL:

DATE:

****ATTENTION****
 ANY USE, REPRODUCTION,
 COPYING, MODIFICATION, OR
 DERIVATIVE WORK OF THE PLAN(S)
 FURNISHED BY **JORDAHL CUSTOM
 HOMES** IS A VIOLATION OF THE UNITED
 FEDERAL COPYRIGHT ACT.
 © 2006 JORDAHL CUSTOM
 HOMES, INC.

DRAWN BY: MICHAELA P.
 CHECKED BY: ERIK H.
 DATE: JULY 8, 2024

REVISION #1:
 REVISION #2:
 REVISION #3:
 REVISION #4:
 REVISION #5:
 REVISION #6:

3755 19TH - MODEL HOME

3755 19TH STREET SOUTH
 CITY OF MOORHEAD, MN 56560
 LOT #12 / BLOCK #1
 JOHNSON FARMS 7TH ADDITION

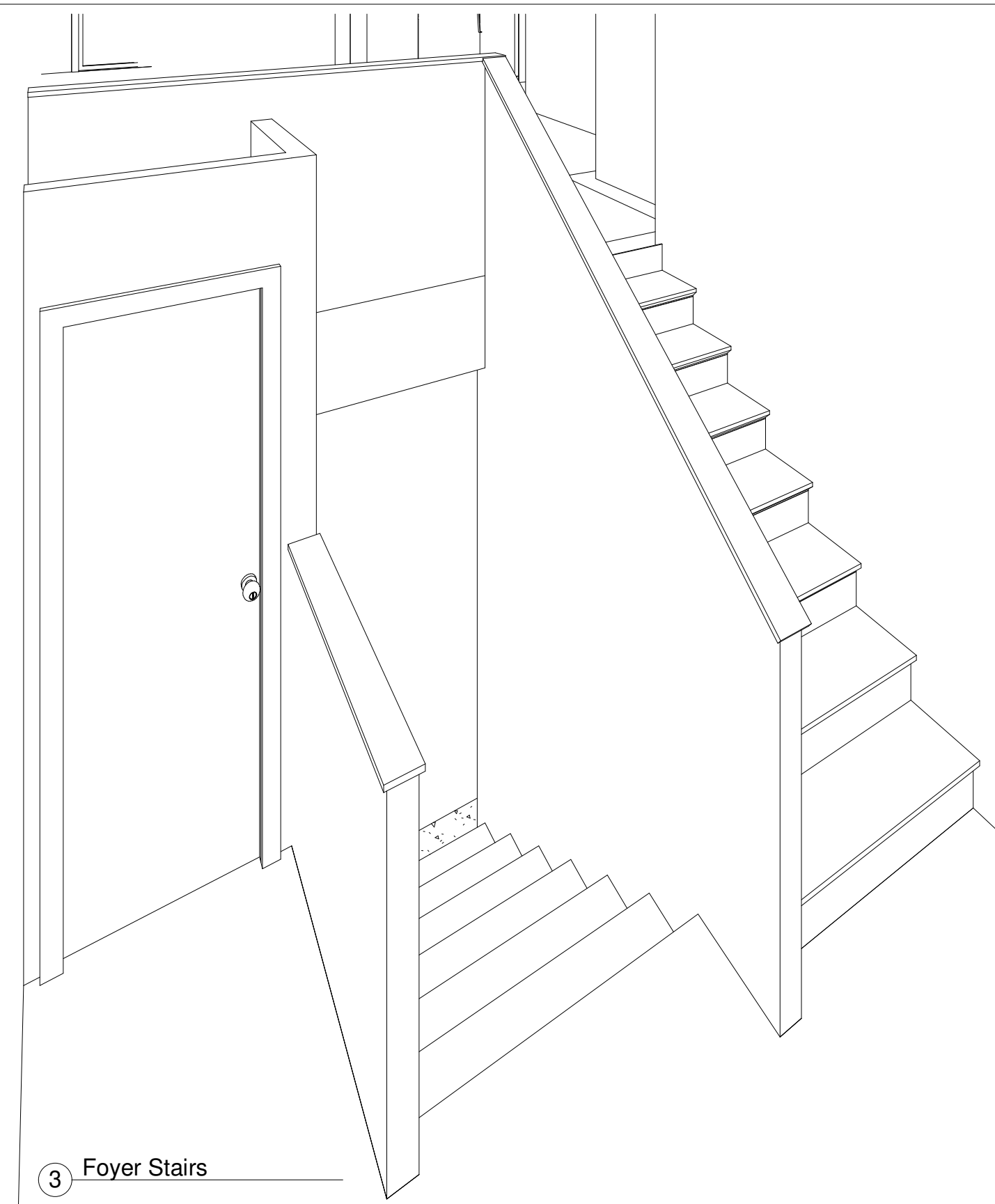
SHEET DESCRIPTION

UPPER LEVEL FLOOR PLAN

HOUSE TYPE OR DESCRIPTION

WALSH - 2 STALL

A2



3 Foyer Stairs

*NOTES:

- FOYER PLATE/CEILING HTS (VERIFY)
- STAIRWAY, LIVING ROOM, KITCHEN, & DINING ROOM HAVE VAULTED CEILINGS (2.5/12 I.S. PITCH)
- VERIFY STAIRCASE MATERIAL
- ALL ROOF PITCHES WITH 12" OVERHANGS - SEE ROOF PLAN
 - VERIFY ANY M-LAM HEADERS NEEDED TO SUPPORT ROOF LOADS WITH TRUSS MANUFACTURE
 - CONTRACTOR MUST VERIFY ALL WINDOW & DOOR HEADER SIZES WITH TRUSS MANUFACTURE
 - BEAM OVER FOYER @ STANDARD HEADER HEIGHT TO SUPPORT ROOF TRUSSES
- VERIFY KITCHEN CABINET LAYOUT WITH CABINET MANUFACTURE & CONTRACTOR
- VERIFY ALL VERSA-LAM BEAMS IN ROOF SYSTEM (SIZED & TO BE SUPPLIED BY TRUSS MANUFACTURE)
- BOTTOM OF ALL WINDOW HEADERS MAY VARY - SEE WINDOW SCHEDULE (VERIFY HEADER MATERIALS)
 - *VERIFY ALL R.O. WITH CONTRACTOR (SUPPLIED BY OTHERS)
 - *VERIFY ANY AND ALL GRILLES ON WINDOWS (FRONT ONLY) WITH CONTRACTOR
- ADD BACKING FOR HANDRAIL
- VERIFY TRUSS LOCATION FOR PLUMBING INTERFERENCE
- (3) 2 X 10 HEADER MATERIAL FOR SUPPORT

GARAGE SQUARE FOOTAGE

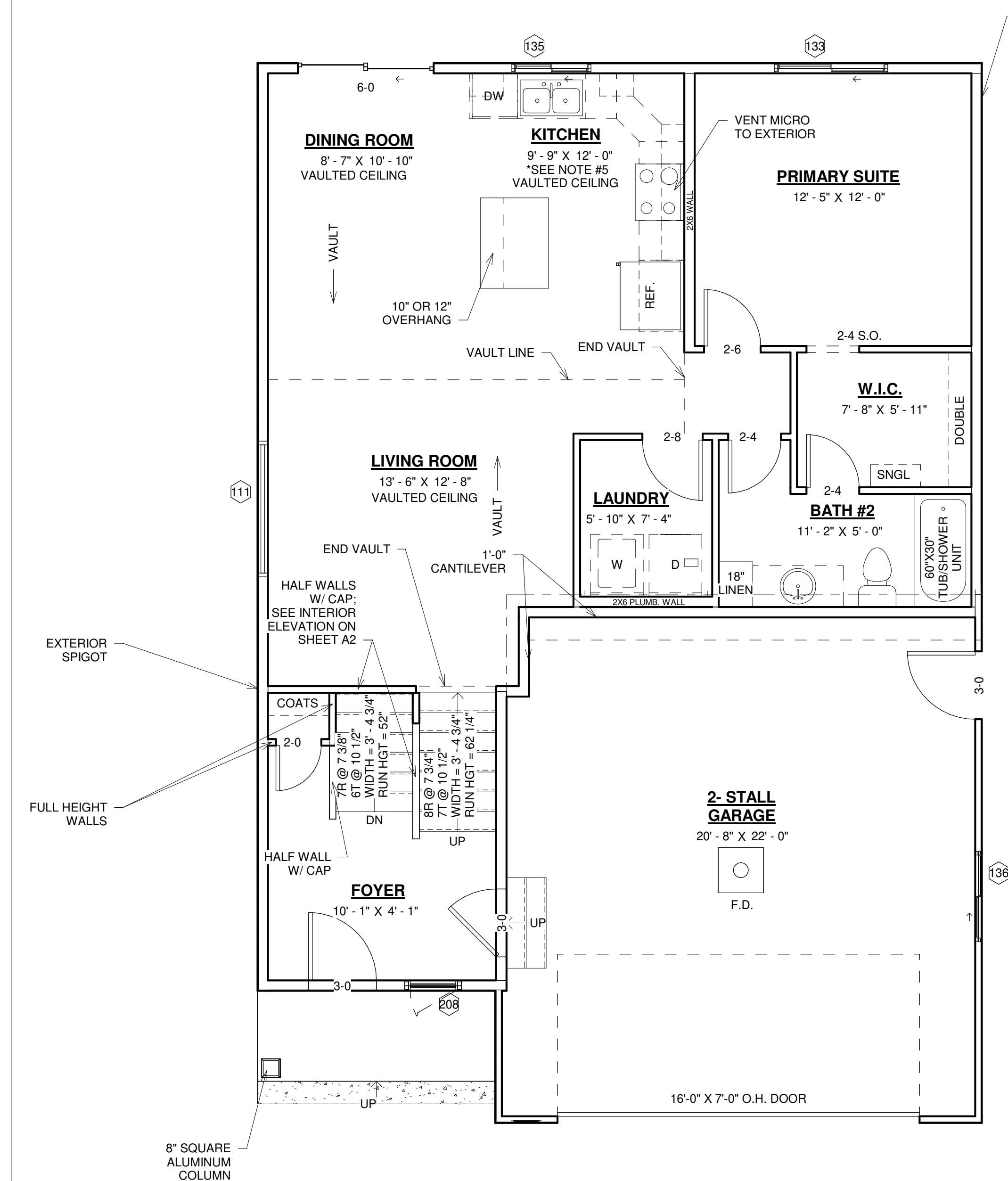
	GARAGE	492.98 SF
2- Stall		492.98 SF

HOUSE SQUARE FOOTAGE

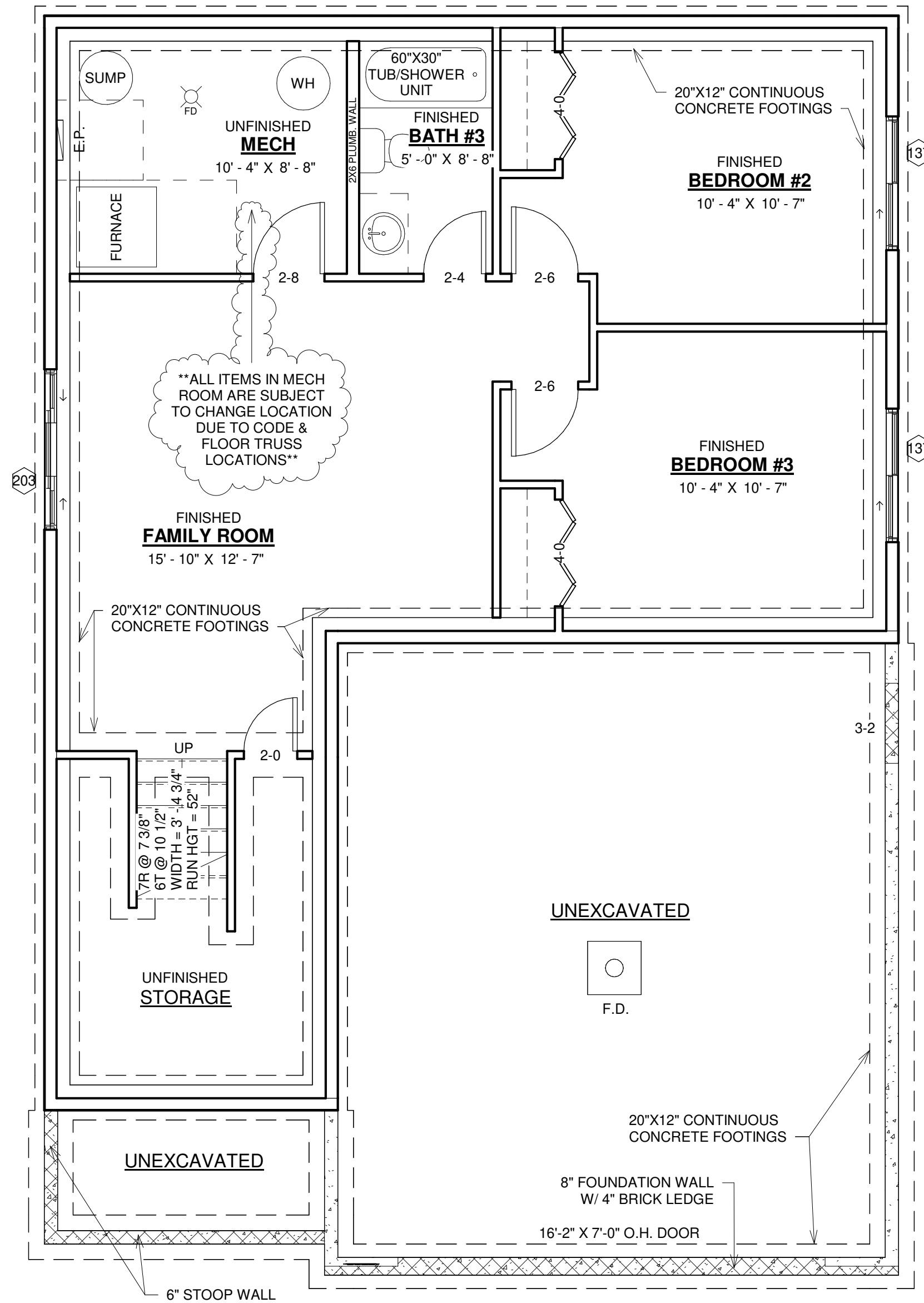
LEVEL	AREA
Finished	
UPPER LEVEL	820.94 SF
FOYER & STAIRS	148.04 SF
LOWER LEVEL	701.83 SF
Finished	1670.82 SF
UnFinished	
LOWER LEVEL	96.26 SF
LOWER LEVEL	146.44 SF
UnFinished	242.70 SF
Grand total	1913.52 SF

Window Schedule - Upper Level

Window #	Type	Size	Level	Head Height	Comments	Count
136	Slider	48" x 24"	Garage Level	6' - 10 7/8"	No Grids	1
208	Casement	30" x 42"	Foyer	6' - 10 7/8"	No Grids	1
111	Transom	72" x 18"	Foyer	12' - 0"	No Grids	1
135	Slider	42" x 36"	Upper Level	6' - 10 7/8"	No Grids	1
133	Slider	60" x 48"	Upper Level	6' - 10 7/8"	No Grids	1
111	Transom	72" x 18"	Upper Level	6' - 10 7/8"	No Grids	1
Grand total						6



1 Main Level Floor Plan
 1/4" = 1'-0"



1 Basement Level Floor Plan
1/4" = 1'-0"

***NOTES:**

1. UNDISTURBED EARTH UNDER BUILDING FOOTING.
2. 18" FLOOR TRUSSES (UPPER FLOOR)
 - *VERIFY SPACING W/ TRUSS MANUFACTURE
 - FRAME END WALLS UP TO MATCH TOP OF FLOOR TRUSSES
 - *NO GABLE END TRUSSES
 - VERIFY ALL VERSA-LAM BEAMS IN FLOOR SYSTEM (SIZE & TO BE SUPPLIED) BY TRUSS MANUFACTURE
 - VERIFY M-LAM HEADERS NEEDED TO SUPPORT FLOOR & ROOF LOADS WITH TRUSS MANUFACTURE
 - CONTRACTOR MUST VERIFY ALL WINDOW & DOOR HEADER SIZES WITH TRUSS MANUFACTURE
3. (2) 2 X 10 HEADERS
4. ALL DASHED LINES ARE FUTURE CONSTRUCTION
 - *VERIFY 2 X 4 I.S. FURRING ALONG CONCRETE KNEE WALL
 - EXCEPTION - CONCRETE FOOTINGS UNDER FOUNDATION WALLS
5. VERIFY ALL VERSA-LAM BEAMS IN FLOOR SYSTEM (SIZED & TO BE SUPPLIED BY TRUSS MANUFACTURE)
6. BOTTOM OF ALL WINDOW HEADERS MAY VARY - SEE WINDOW SCHEDULE (VERIFY HEADER MATERIALS)
 - *VERIFY ALL R.O. WITH CONTRACTOR (SUPPLIED BY OTHERS)
 - *VERIFY ANY AND ALL GRILLES ON WINDOWS (FRONT ONLY) WITH CONTRACTOR
7. ADD BACKING FOR HANDRAIL
8. VERIFY TRUSS LOCATION FOR PLUMBING INTERFERENCE

GARAGE SQUARE FOOTAGE	
GARAGE	492.98 SF
2-Stall	492.98 SF

HOUSE SQUARE FOOTAGE	
LEVEL	AREA
Finished	
UPPER LEVEL	820.94 SF
FOYER & STAIRS	148.04 SF
LOWER LEVEL	701.83 SF
Finished	1670.82 SF
UnFinished	
LOWER LEVEL	96.26 SF
LOWER LEVEL	146.44 SF
UnFinished	242.70 SF
Grand total	1913.52 SF

Window Schedule - Lower Level					
Window #	Type	Size	Head Height	Comments	Count
203	3 Lite End Vent Glider	72" x 42"	7' - 1 1/2"		1
137	Slider	60" x 42"	7' - 1 1/2"	<varies>	2
Grand total					3

Jordahl
Custom Homes Inc.

Jordahl Custom Homes
2832 Sheyenne Street
West Fargo, North Dakota 58078
Phone : 701 - 234 - 0404
Fax : 701 - 282 - 4342
www.jordahlcustomhomes.com

FINAL DRAWINGS FOR CONSTRUCTION
CUSTOMER APPROVAL:

DATE:

ATTENTION
ANY USE, REPRODUCTION, COPYING, MODIFICATION, OR DERIVATIVE WORK OF THE PLAN(S) FURNISHED BY JORDAHL CUSTOM HOMES IS A VIOLATION OF THE UNITED FEDERAL COPYRIGHT ACT.
© 2006 JORDAHL CUSTOM HOMES, INC.

DRAWN BY: MICHAELA P.
CHECKED BY: ERIK H.
DATE: JULY 8, 2024

REVISION #1:
REVISION #2:
REVISION #3:
REVISION #4:
REVISION #5:
REVISION #6:

3755 19TH - MODEL HOME

3755 19TH STREET SOUTH
CITY OF MOORHEAD, MN 56560
LOT #12 / BLOCK #1
JOHNSON FARMS 7TH ADDITION

SHEET DESCRIPTION
LOWER LEVEL FLOOR PLAN

HOUSE TYPE OR DESCRIPTION
WALSH - 2 STALL

A3